



# 2022 FIRST QUARTER REPORT

January 1 - March 31, 2022



Office of the  
Recorder

## Table of Contents

<b>Letter from the Recorder</b> .....	3
<b>Recording Services Department</b> .....	4
<b>Voter Registration Department</b> .....	5
<b>Information Technology (IT) Department</b> .....	6
Geographic Information Systems (GIS).....	6
<b>Elections Department</b> .....	7
2022 Elections .....	7
Just the Facts & Election Connection.....	9
Premium Poll Worker Training.....	10
Voter Outreach and Education .....	10
<b>External Affairs Department</b> .....	11
Constituent Relations Team.....	11
Constituent Correspondence .....	11
Public Records Requests .....	11
Deputy Registrar Program .....	12
Legislative Affairs .....	12
<b>Contact Us</b> .....	12
Appendix A – Recording Services Statistics.....	A1
Appendix B – Voter Registration Figures .....	B1

## Letter from the Recorder

Dear Maricopa County:

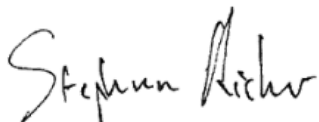
Start your engines. The 2022 midterm elections are almost upon us, and it's a beehive of activity at the Maricopa County Recorder's Office and Elections Department. We've been identifying voting locations, recruiting temporary election workers, sending out 90-day notices, reviewing candidate signature petition sheets, and building ballots. Our detailed plans for the August 2 Primary and November 8 General elections have been approved and [are available online](#). Please [take a look](#) if you're interested in our plan to successfully, securely, and accessibly administer the upcoming elections.

But the upcoming elections aren't the only thing we've been working on. This report reflects that. We're currently administering a land sale election for the City of Litchfield Park, and in March we administered the Tempe City Council election. On the Voter Registration front, we've begun mailing out updated voter registration cards to all 2.6 million registered voters. Public records requests are through the roof, and though down from this time last year, our number of daily recordings continues to total in the thousands.

If such activity sounds like fun to you, and you have availability for the summer, please consider joining us as a temporary elections worker! ([GetInvolved.Maricopa.Vote](#))

Thank you for the opportunity to serve Maricopa County.

Stephen

A handwritten signature in black ink that reads "Stephen Richer". The signature is written in a cursive, slightly slanted style.

Stephen Richer  
Maricopa County Recorder

## Recording Services Department

The County Recorder is responsible for recording and maintaining public records for Maricopa County and has maintained this permanent public record since 1871. Most recorded documents are real estate related, such as deeds, titles, and plat maps. Customers can record documents digitally through an [online account](#), by mail, in person at our downtown Phoenix location, and soon-to-launch customer kiosks at five locations throughout the county!

Between January 1, 2022 and March 31, 2022, the Office recorded 291,294 documents – a 19.72 percent decrease from the 362,885 documents recorded in the first quarter of 2021.<sup>1</sup> Most documents are now recorded digitally – 92 percent through the first quarter of this year.

In January 2022, Recorder Richer and a few members of the Recorder's Office team spoke on a panel and opened the 2022 Property Records Industry Association (PRIA) Annual Conference. Watch [our video](#) from the conference to see how Maricopa County has been recording documents into the public record since our founding on February 14, 1871.



Documents (except for plats and surveys) are recorded for a flat fee of \$30, regardless of document length.

In addition to entering documents into the public record, the Office indexes documents to be [searchable](#) on the Recorder's Office website. There are currently over 52 million searchable documents dating back to 1871. The team indexes 5,000 documents a day on average, with an approximately 72-hour turnaround time for those documents to be searchable by name on the Recorder's Office website.

For more recording statistics, see [Appendix A](#).

---

<sup>1</sup> Statistics do not include same day voided documents, de minimis of the total recorded documents

## Voter Registration Department

The Maricopa County Recorder's Office is responsible for voter registration and the maintenance of the county's voter rolls. Maricopa County has approximately 2.6 million active registered voters. This year-round work includes modifications to existing records, cancelations, and corrections, in addition to processing new voter registration applications.

The Voter Registration Department remains busy as large numbers of voters continue to move to Maricopa County and new housing developments are mapped into districts. Between January 1 and March 31, we received 32,135 new voter registration applications.

Voters regularly make updates or changes to their voter registration records such as partisan affiliation, addresses, and active early voting list (AEVL) status. For example, between January 1 and March 31, we received 18,429 political party registration changes.

The Voter Registration Department performs continual maintenance to keep the voter rolls in compliance and up-to-date, utilizing reports from the Secretary of State's Office and tools such as National Change of Address reports and monthly [Electronic Registration Information Center \(ERIC\)](#) Deceased Reports.

During the first quarter of 2022, the Voter Registration Department also completed verification of \$5 Qualifying Contributions for Clean Elections Candidates and began preparations for candidate petition signature filings and candidate petition challenge periods.

### New Voter Registration Cards

Be sure to check your mailbox! New Voter Registration cards are now being mailed out with new legislative and congressional districts and voting precincts that were updated due to the decennial U.S. Census and the Arizona Independent Redistricting Commission process. Check your mail for the hard copy Voter Registration Card or view your digital Voter Registration card online at [BeBallotReady.Vote!](#)

**Your New Voter Identification Card Has Arrived!**  
¡SU NUEVA TARJETA DE IDENTIFICACIÓN DE VOTANTE HA LLEGADO!

**OFFICIAL ELECTION MAIL**  
Authorized by the U.S. Postal Service

Your voting districts have been updated as a result of the 2020 U.S. Census.

Sus distritos han sido actualizados como resultado del Censo de EE. UU. 2020.

**VOTER IDENTIFICATION CARD**  
Stephen Richer  
Maricopa County Recorder

Get your digital Voter Identification Card online at [BeBallotReady.Vote](#)

Obtenga su Tarjeta de Identificación de Votante digital en línea en [TengaBoletaLista.Voto](#)

For more voter registration statistics, see [Appendix B](#).

## Information Technology (IT) Department

The Information Technology (IT) Department provides technology solutions for both the Maricopa County Recorder's Office and Elections Department. Ongoing projects of the IT department include: the process of better storing and organizing the Office's 52 million recorded documents dating back to 1871, updates to Maricopa County's SiteBook voter check-in system, transitioning all technology servers and infrastructure to a new redundant datacenter model to provide more consistent quality of service, the redesign and recoding of the Office's voter registration database, and the redesign and recoding of the Office's website.

### Geographic Information Systems (GIS)

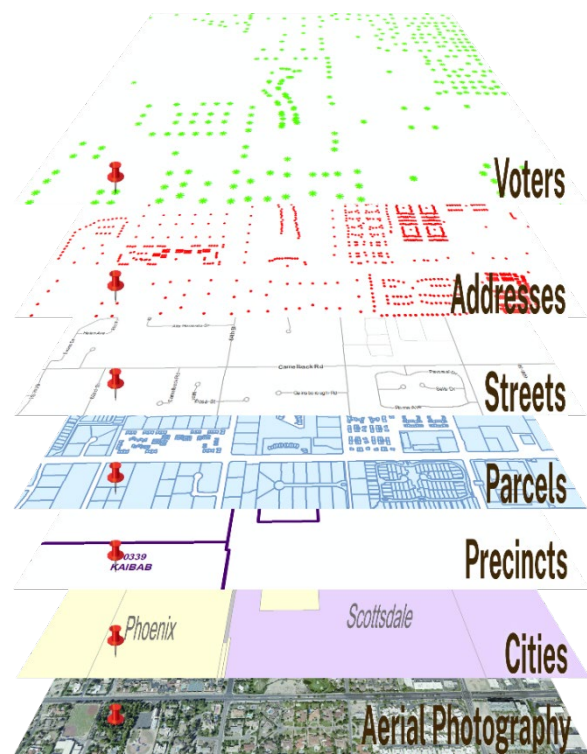
A geographic information system (GIS) is a collection of spatial information that maps people, places, and things. The Maricopa County Recorder's Office and Elections Department uses GIS for the voter registration and election planning.

When a voter registers or changes his registration, the Office searches the voter's address within the department's spatial address database. Once the address is found, the Office uses spatial intersection functions to find voter's districts. This image is an example of these district layers.

In addition to adding new addresses, jurisdictional annexations, and providing mapping services to the public every day in rapidly growing Maricopa County, the Office's GIS team continued its activity on the redistricting and reprecincting process in this first quarter. While the [Arizona Independent Redistricting Commission](#) (AIRC) is responsible for

redrawing Congressional and Legislative district lines, Maricopa County is responsible for updating voting precincts, justice court precincts, and the Board of Supervisor district boundaries. On March 7, Elections Department Director of Election Day and Emergency Voting Scott Jarrett [presented](#) to the Maricopa County Board of Supervisors [updates on the voting and justice court precincts](#) which align these precincts to the Congressional and Legislative district boundaries adopted by the AIRC on January 24, 2022.

The five Board of Supervisor district boundaries will be redrawn by July 1, 2022 and will take effect in 2024. The Community College and Special Health Care Districts align with the Board of Supervisor district boundaries and will also be updated when the Board of Supervisor district boundaries have been finalized.



## Elections Department

The Maricopa County Elections Department is jointly administered by the County Board of Supervisors and Recorder's Office through two election directors authorized to carry out the operations and statutory responsibilities of the respective entities. The partnership is governed by federal and state law, as well as the [Elections Operations Agreement](#) executed in July 2021.

### 2022 Elections

The Elections Department has already administered one jurisdictional election during the first quarter of 2022, and is in full swing preparing for May, August, and November elections. For all election dates and deadlines, visit [Calendar.Maricopa.Vote](#). Voters can visit [BeBallotReady.Vote](#) to verify their registration information, update their addresses, and find out more about Maricopa County elections.

#### ❖ **March 8: City of Tempe Jurisdictional Election**

The City of Tempe held a city council candidate election to fill [three council seats](#) on March 8, 2022. Out of 101,822 eligible registered voters, 21,338 Tempe residents cast ballots. Councilmembers-elect Jennifer Adams, Arlene Chin, and Berdetta Hodge received the highest number of votes out of the seven candidates and have terms commencing at the first regular meeting of the Tempe City Council in July 2022. A few other stats from this election: 100% of the ballots were signature verified by trained staff, curing over 160 ballots with signature issues. 85% of ballots were returned by mail, 14% dropped off, and 1% voted in person.

#### ❖ **May 17: City of Litchfield Park Jurisdictional Election**

The City of Litchfield Park is holding a land sale election in May of 2022. As a ballot-by-mail election, all eligible voters were mailed a ballot on April 20. Voters may mail back their ballot in its sealed and signed affidavit envelope, drop it off, or vote in person. Check out [Locations.Maricopa.Vote](#) for more information on ways to vote, voting locations, and how to request a replacement ballot.



**WHAT'S A  
BALLOT-BY-MAIL ELECTION?**

By law, your city, town or school district can call for a special election conducted by mail.

All qualified voters that live in Litchfield Park will be automatically sent a ballot on April 20.

See if you're eligible at:  
**BeBallotReady.Vote**

**MAY 17, 2022**  
JURISDICTIONAL ELECTION

Voters can check their eligibility, verify their voter registration information, and track their ballot online at [BeBallotReady.Vote](#).

## ❖ **August 2: Statewide Primary Election**

Arizona's statewide primary election occurs every two years, always in an even year. This election includes federal, state, county, and local offices. As a primary election serves to narrow down each recognized political party's candidates, there are ballots for Republican, Democratic, and Libertarian voters. Some areas may have a non-partisan ballot option. With the August Primary Election less than four months away, we're mailing out 90-day notices to all voters on the Active Early Voting List on May 2.



### **ATTENTION INDEPENDENT VOTERS!**

Remember, if you're an independent voter or registered without a party preference, you'll need to let us know your ballot choice. You can do so using the 90-day mailer or at [BeBallotReady.Vote](https://www.maricopa.gov/BeBallotReadyVote) beginning on May 2. If you've moved or if you need to register to vote, visit [BeBallotReady.Vote](https://www.maricopa.gov/BeBallotReadyVote) to check your status, update your address, and find out more about Maricopa County elections.

**ELECTION CALENDAR**  
2022 AUGUST PRIMARY ELECTION

<b>June 18</b> Military and Overseas Ballots Mailed	<b>July 5</b> Voter Registration Deadline	<b>July 6</b> Ballots Mailed, Drop Boxes Available
<b>July 22</b> Last Day to Request a Replacement Ballot in the Mail	<b>July 26</b> Last Day to Mail Back Your Ballot	<b>August 2</b> Election Day!

**BeBallotReady.Vote**

## ❖ **November 8: Statewide General Election**

Arizona's statewide general election occurs every two years, always in an even year. This election includes federal, state, county, and local offices.

### **Are you ready to [Get Involved](https://www.maricopa.gov/GetInvolvedMaricopaVote) as a poll worker or temporary election worker?**

The Elections Department needs to hire more than 2,500 temporary workers for the 2022 August Primary and November General Elections! You can help your community be ballot ready and earn money while supporting elections. Poll workers, truck drivers, warehouse positions, and more all need to be filled and job openings vary from one day to six months. Visit the newly relaunched [GetInvolved.Maricopa.Vote](https://www.maricopa.gov/GetInvolvedMaricopaVote) webpage to read more about the positions available and submit an interest form to join the team!



### ***Are you a facility owner?***

The Elections Department is looking for voting locations throughout Maricopa County for the 2022 Primary and General Elections. If you have a site that is at least 1600 square feet, with access to electricity, air conditioning, restrooms, and is ADA compliant, please contact [pollplace@risc.maricopa.gov](mailto:pollplace@risc.maricopa.gov) to help voters vote in these upcoming elections.

### ***Are you a candidate or political action committee in Maricopa County?***

The team has been busy with candidate campaign and nomination petition filings, as well as helping inform the County political parties about recent legislation impacting [Precinct Committeemen](#). Please visit the [Candidates, Committees & Campaign Finance page](#) if you are looking to run for office or start a Political Action Committee (PAC) in Maricopa County, or need to file campaign finance reports for your candidate or political committee.

### ***Just the Facts & Election Connection***

Elections are complex and governed by many state and federal laws and procedures. [JustTheFacts.Vote](#) debuted in 2021 as a new website the Elections Department created to share facts, dispel myths, and provide information about the elections process in Maricopa County. You can also get these updates about Maricopa County elections operations directly in your inbox by subscribing to the "[Just the Facts](#)" newsletter! Recent newsletter editions have focused on topics like local and jurisdictional elections that occur throughout the year, and the security and verifiability of voting by mail.

A new video series, Election Connection, debuted this month as part of the newsletter and features Elections Directors Scott Jarrett and Rey Valenzuela answering questions submitted exclusively by Just the Facts subscribers! [Sign up to receive the Just the Facts newsletter](#), the Election Connection video series, and get a chance to submit your own questions. Watch the first episode by clicking on the image below!



## Premium Poll Worker Training

The Elections Department provides poll workers with both election specific and premium training to ensure critical election workers have an understanding of the laws, processes, equipment, and resources necessary to best support voters at the polls. In 2021, the Recruitment and Training team launched a new Premium Poll Worker training program designed for leaders of voting locations. Here are statistics of the program as of March 31, 2022:

- ❖ 12 Premium Poll Worker Trainings held January 1 – March 31, 2022
- ❖ 150 Premium Poll Workers certified in the first quarter of 2022
- ❖ 24 classes have been held for the duration of the program and a total of 320 Premium Poll Workers have been certified, achieving just over two-thirds of the goal of certifying two poll workers at each voting location for the 2022 Primary and General Elections.
- ❖ The Training Team will offer 9 more Premium classes between April and August 2022 to achieve the goal of certifying two poll workers at each voting location for the 2022 Primary and General Elections.

## Voter Outreach and Education

Maricopa County is committed to making a positive impact in the community by leveraging community events and other opportunities to engage, educate, and inform voters about elections. The Voter Outreach Team's primary goals for the 2022 election cycle are: educate voters, build trust in election administration and the voting process, and attract election workers.

**Virtual Election Education Series:** We've launched a new virtual workshop series to provide specific election information hosted by our election experts. The first workshop was held May 11 and discussed recruitment and training opportunities and answered questions from the public. Future webinar topics include early voting, in-person voting, and tabulation.

Make sure you're subscribed to "[Just the Facts](#)" for more community event information!



*Phil the Ballot and our Voter Outreach and Recruiting Teams had a great time Educating Students at the Mesa Community College event on Valentine's Day 2022 celebrating Arizona's Statehood. Submit your selfie with your sticker or attending one of our events by tagging @MaricopaVote on [Facebook](#), [Twitter](#), or [Instagram](#).*

## External Affairs Department

### Constituent Relations Team

The Recorder's Office Communications and Constituent Relations Team works alongside the Elections Department Communications team to respond to voters. The Constituent Relations Team provides information to the public through quarterly and [annual reports](#)<sup>2</sup>, by directly assisting constituents day-to-day, fulfilling public records requests, and managing the Deputy Registrar program for the Maricopa County Recorder's Office.

### Constituent Correspondence

In addition to calls transferred to the team from the Maricopa County STAR Center, constituents contact the Office through multiple email inboxes and social media channels. The Recorder's Office Constituent Relations Team directly handles constituent requests and escalates issues as needed to the appropriate subject matter experts throughout the Recorder's Office and Elections Department. The Office receives hundreds of emails every week from constituents. Inquiries include voter registration requests and questions about new Voter Registration Cards, questions about how to get involved as a poll worker, and questions about election administration.

### Public Records Requests

The Office continues to see an increase in the number of public records requests submitted. In the first quarter of 2022, the Office received almost half the total number of requests received throughout 2021. A requestor can directly submit a non-commercial or commercial purpose public records request online through the [Maricopa County public records request portal](#) (*search for Recorder **By Department***).

During the first quarter of 2022, January 1 – March 31, the Office received 177 public records requests. Records requests from the media accounted for 24 of the 177. Staff worked hard to complete these requests, and all but 11 of the 177 have been entirely resolved. See the breakdown below.

January 1 – March 31, 2022 Public Records Requests Received by Category		January 1 – March 31, 2022 Records Requests Received by Month	
Extensive Research	53	January 2022	52
Voter Data	46	February 2022	42
Voter Information	73	March 2022	83
Statement of Interest	2		
Recording Investigations	3		
<b>Total:</b>	<b>177</b>	<b>Total:</b>	<b>177</b>

<sup>2</sup> See [Publications](#) page for the [2021 Annual Report](#) and all 2021 Quarterly reports.

## Deputy Registrar Program

The Recorder's Office Deputy Registrar Program trains and certifies volunteers to provide voter registration and election information in their communities. In addition to the introductory training and certification class, the program expanded its curriculum in 2021 to offer continuing education courses to these volunteers and has seen growing interest in 2022.

Deputy Registrar Program recap for the first quarter of 2022: January 1 – March 31:

- ❖ 13 new Deputy Registrars were certified and added to this corps
- ❖ 833 total Deputy Registrars with the Office as of March 31
- ❖ 3 Deputy Registrar Introduction Classes offered January 1 – March 31
- ❖ 1 Corporate Deputy Registrar Introduction class
- ❖ 3 Continuing Education Classes offered January 1 – March 31 covering topics such as:
  - 2 "Deputy Registrar Refresher" courses
  - 1 "Proposition 200" course

We've had increased interest from corporations around topics of election laws, voter registration, and election administration. The Recorder's Office is now partnering with corporations to provide voter registration and election information to the corporation's employees. If you represent an interested company, please contact Ilene at [voterinfo@risc.maricopa.gov](mailto:voterinfo@risc.maricopa.gov).

## Legislative Affairs

The Legislative Team actively monitors legislation that affects the Maricopa County Recorder's Office and Elections Department.

Below are two significant bills passed during the 2022 legislative session:

1. [SB 1089](#) (liens; fees; exemption). This bill waives the ordinary \$30 recording fee for the recordation or release of a restitution lien or any lien necessary to enforce a support order.
2. [HB 2492](#) (voter registration; verification; citizenship). This bill adds additional requirements to verify citizenship of registrants, specifically those who are Federal Only Voters. This bill also updates the procedures that County Recorders must follow when they are unable to verify the citizenship of a registrant.

## Contact Us

If you have any questions, please contact the team at [voterinfo@risc.maricopa.gov](mailto:voterinfo@risc.maricopa.gov).

## Appendix A – Recording Services Statistics

### Appendix A – Recording Services Statistics – Infographic Figure A1

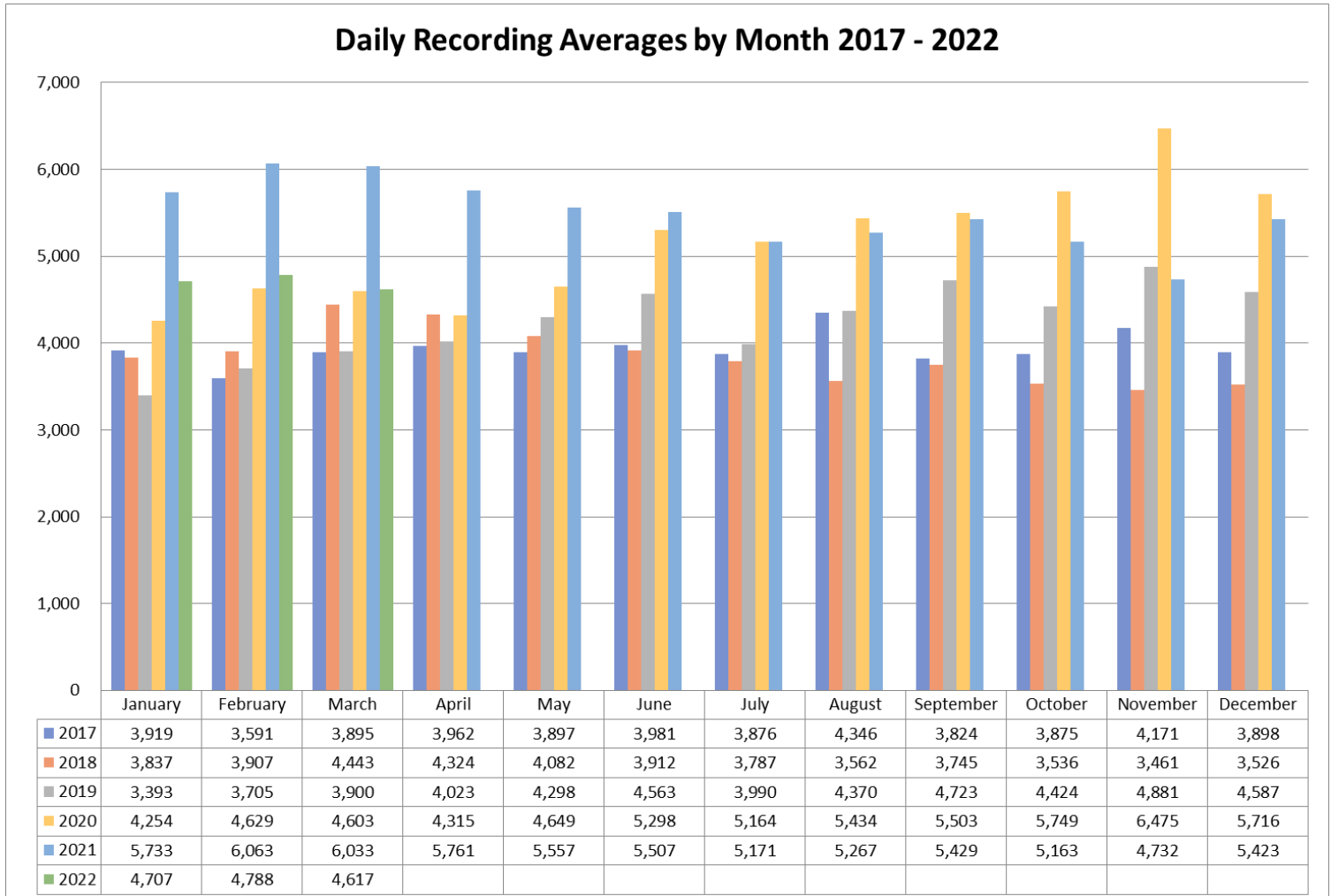


Figure A1 graphs the average number of documents recorded daily by month and year from 2017 through the first quarter of 2022.

*The Recording Services department accepts documents for the creation of a permanent public record. These documents are often real property related (ex. deeds, titles, liens) and include any encumbrances placed on real property. Approximately 93% of all documents are now recorded digitally through the Recorder’s Office online portal, and the Office continues to process documents mailed in and serve customers in-person at the public counter in downtown Phoenix.*

## Appendix B – Voter Registration Figures

See Voter Registration totals updated in real time [on our website](#).

**Infographic B1** (*Appendix B Page 2*) contains figures\* on:

Totals of active registered voters by party in Maricopa County as of April 18, 2022

Total of newly registered voters by party in Maricopa County between January 1, 2022 – March 31, 2022

Political Party Voter Registration changes in Maricopa County between January 1, 2021 – March 31, 2022

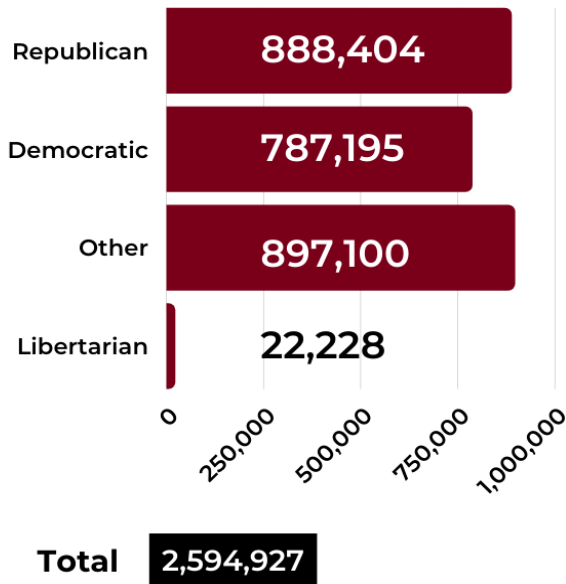
*\*All data retrieved April 18, 2022. Voter registration figures may fluctuate in real time due to ongoing voter list maintenance*



# Voter Registration Figures

## Quarter 1: Jan 1, 2022 - March 31, 2022

### Current Party Active Totals



### Party to Party Changes

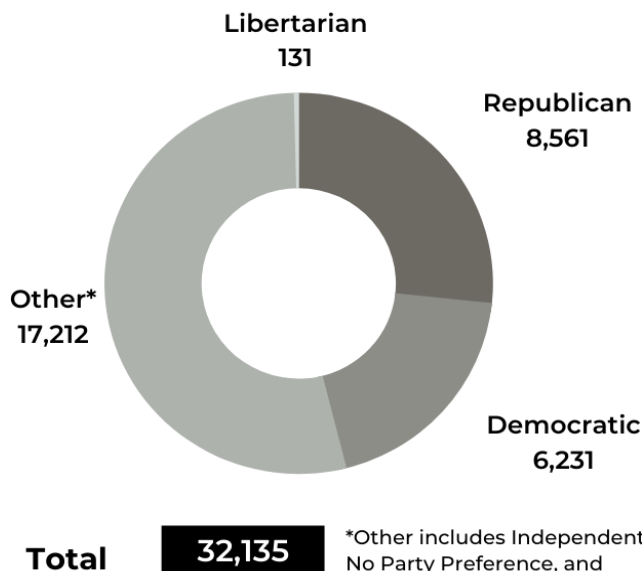
#### Changed to Democratic

Republican	596
Libertarian	57
Other	2,229
<b>Total</b>	<b>2,882</b>

#### Changed to Republican

Democratic	1,091
Libertarian	134
Other	2,956
<b>Total</b>	<b>4,181</b>

### Total New Registrations



\*Other includes Independents, No Party Preference, and other parties not recognized as official parties.

#### Changed to Libertarian

Republican	84
Democratic	54
Other	126
<b>Total</b>	<b>264</b>

#### Changed to Other\*

Republican	3,862
Democratic	4,881
Libertarian	372
Other	1,987
<b>Total</b>	<b>11,102</b>